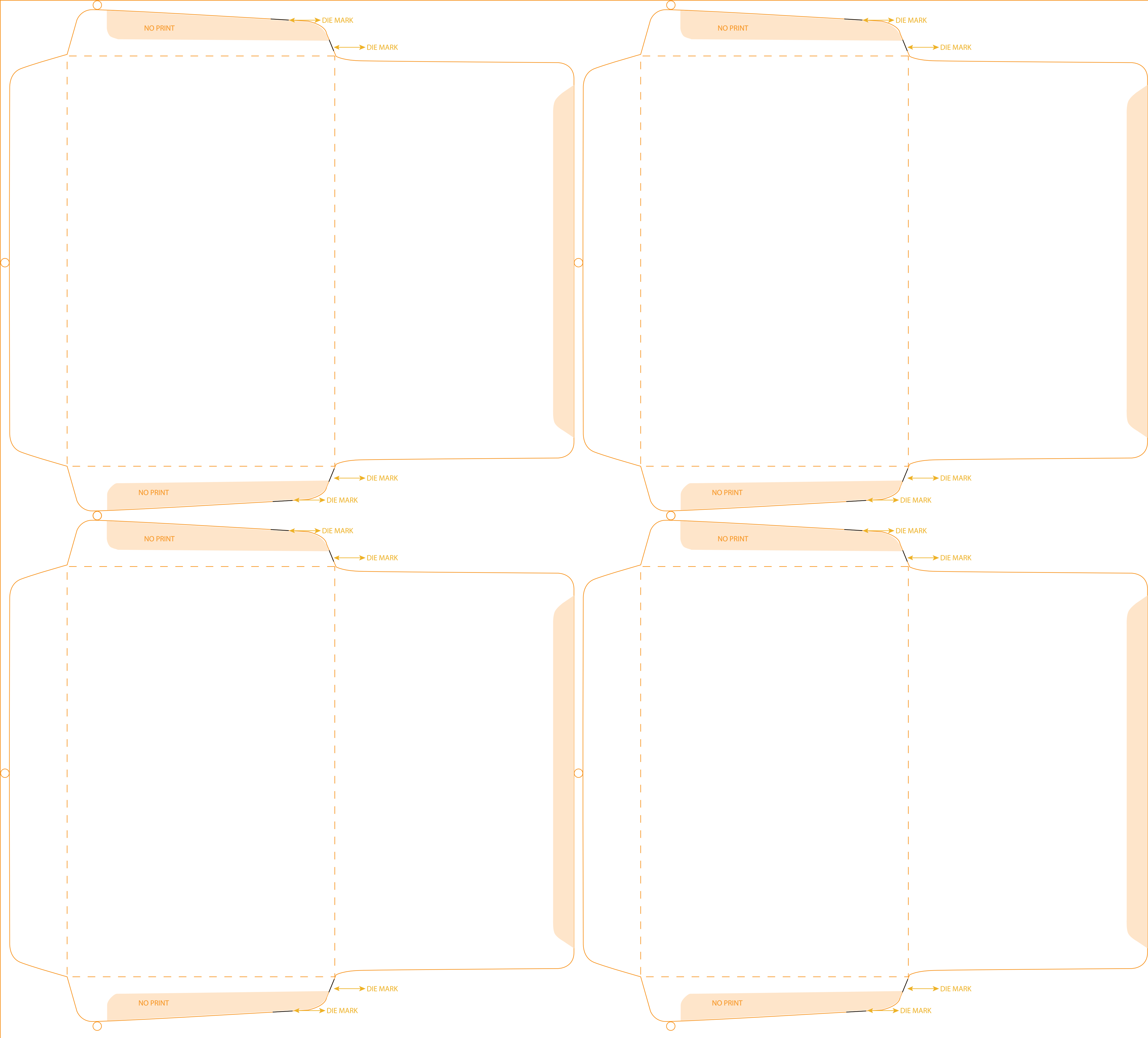


- **CRITICAL POSITION** 3/16" from edge of sheet & between Dies
- If solids are required allow 1/4" bleed on all sides.
- Keep copy 1/4" from windows scores & edge of blank.
- All die marks must appear.
- Die lines do not print.
- This laysheet must be returned to SupremeX.
- Stock must be carefully jogged.
- I.D. Sheet with SupremeX Docket #, number of sheets per skid & print breakdown must be clearly marked on each skid.
- A Dylux / Proof of final laysheet must be approved by SupremeX prior to printing.



GRAIN DIRECTION

5.875" X 9" - DIE #1050
23" X 35" 4UP

GRIPPER
XXXXXXXXXX

GUIDE
XXXXXXXXXX